

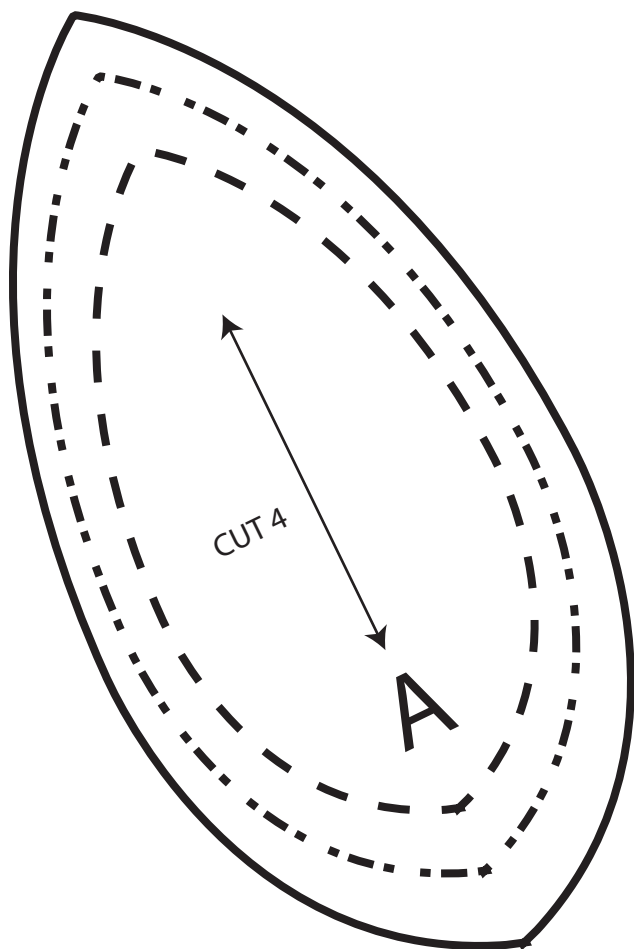
Pine Needles

Fine Fabrics • Quilting • Needlework



PINNEEDLESONLINE.COM

801-233-0551 1100 W 7800 S #29s West Jordan UT 84088



small, medium & large sizes

You will need:

(1) 5" x 10" cotton fabric for each egg

Polyester Fiberfill

All measurements include 1/4" seam allowance

1. For each egg cut 4 (A) (three sizes are provided. Cut 4 of the desired size)
2. Place 2 (A) pieces right sides together. Sew along one edge, leaving a 1" opening (see fig 1).
3. Place remaining 2 (A) pieces right sides together and sew along one edge. (see fig 2).
4. Place two egg halves right sides together. Line up top and bottom seams (see fig 3). Pin. Sew two pieces together. Turn right side out. Stuff with fiberfill and hand stitch opening closed.

Try using a different fabric for each quarter. Enlarge template for a larger egg. Be creative and have fun!

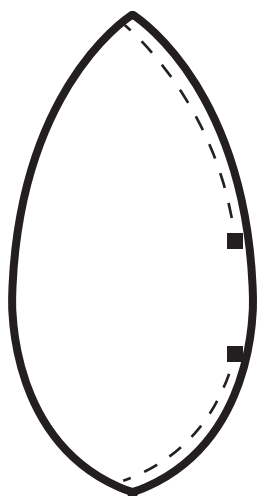


Fig 1

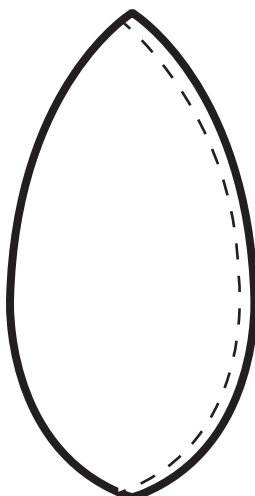


Fig 2

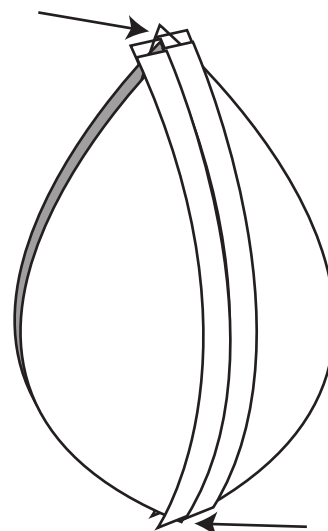


Fig 3